

EXPONA®

DESIGN

HEAVY COMMERCIAL LUXURY VINYL TILES





EXPONA[®] DESIGN

Introducing a new concept in high-design flooring, each of Expona Design's heavy commercial floor coverings has been expertly curated using authentic reproductions of natural materials and harmonious colour tones, so they can be used in conjunction with one another to create movement within an interior.

By adding shade and surface texture variation within each floor tile, across a variety of elegant contemporary and decorative designs including innovative graphic design effects, this range will help shape the atmosphere of a room or commercial environment to give the user a feeling of recognition and comfort.

6182
Light Elm
152.4 x 914.4mm



EXPONA DESIGN - Designed to mix.

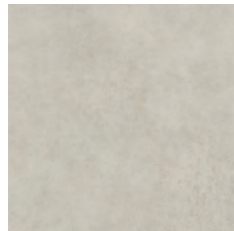
The Expona Design collection of luxury vinyl tiles blurs the lines between natural wood and stone finishes. By intentionally including a variety of patterns with the same harmonious colour scheme, different floor coverings can be combined to add a unique element to any commercial interior.

The exclusive designs featured in this collection provide the opportunity for creativity and encourage play and engagement, resulting in innovative floors that create unique spatial experiences. Let your imagination take hold with these striking designs and construct a floor perfectly suited to every area. With multiple patterns and embossed flooring designs, the collection offers a bespoke and premium look whilst remaining easy to install and maintain.

The recurring colour tones featured in this collection can be seen across various wood, stone and cement designs. This synergy between shades means each design can stand alone or be combined with others from the range to establish defined zones or guide users. This offers greater flexibility when creating an inspiring space.



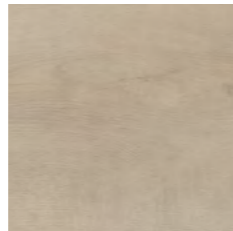
COLLECTION OVERVIEW



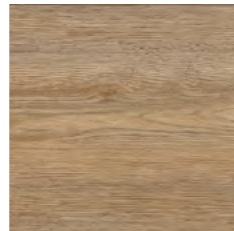
p23
Frosted Cement



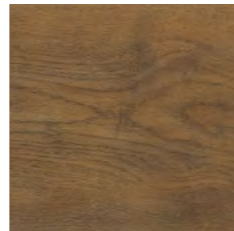
p26
Wet Cement



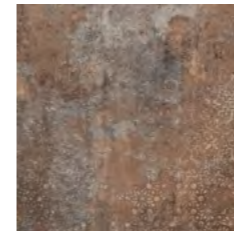
p7,18
Pacific Oak



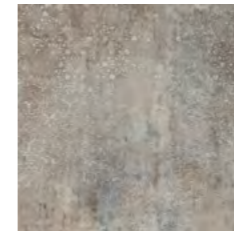
p46
Natural Brushed Oak



p14
Mango Oak



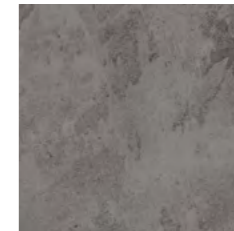
p28,78
Rusted Stencil Concrete



p25,26
Grey Stencil Concrete



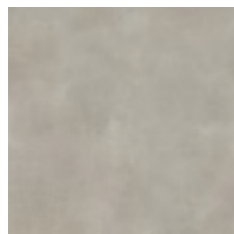
p28,78
Subway Cement



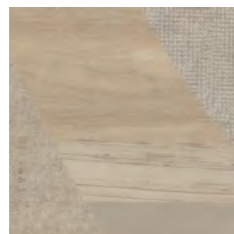
p39,68
Silverline Slate



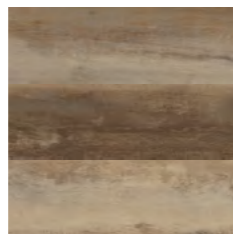
p54
Factory Cement



p43,44
Pearl Stone



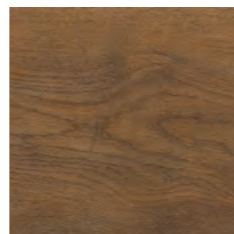
p7,18
Coral Medley



p50
Whiskey Barrel Timber



p13,14
Sepia Medley



p41,68
Parkside Oak



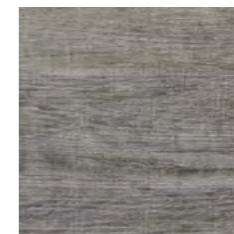
p16
Smoked Medley



p50
Cool Grey Concrete



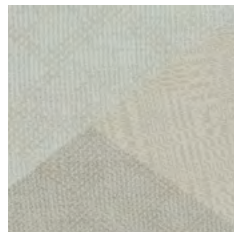
p40,43
Medina Stone



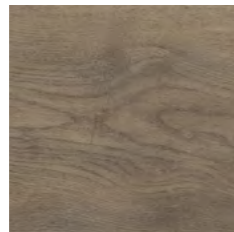
p57
Silvered Driftwood



p36,39
Charcoal Slate



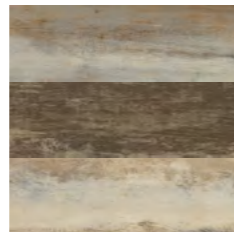
p5,7,19,22
Cream Geotexture



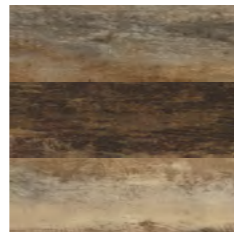
p35
Promenade Oak



p4,32
Light Elm



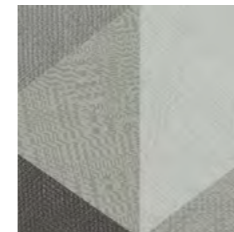
p49
Reclaimed Inked Oak



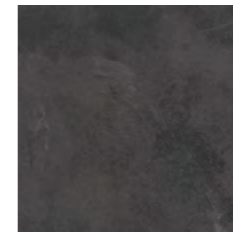
p52
Rustic Spiced Timber



p55
Salvaged Pier Timber



p21
Monochrome Geotexture



p20,41
Atlantic Slate



p31,32
Black Treadplate

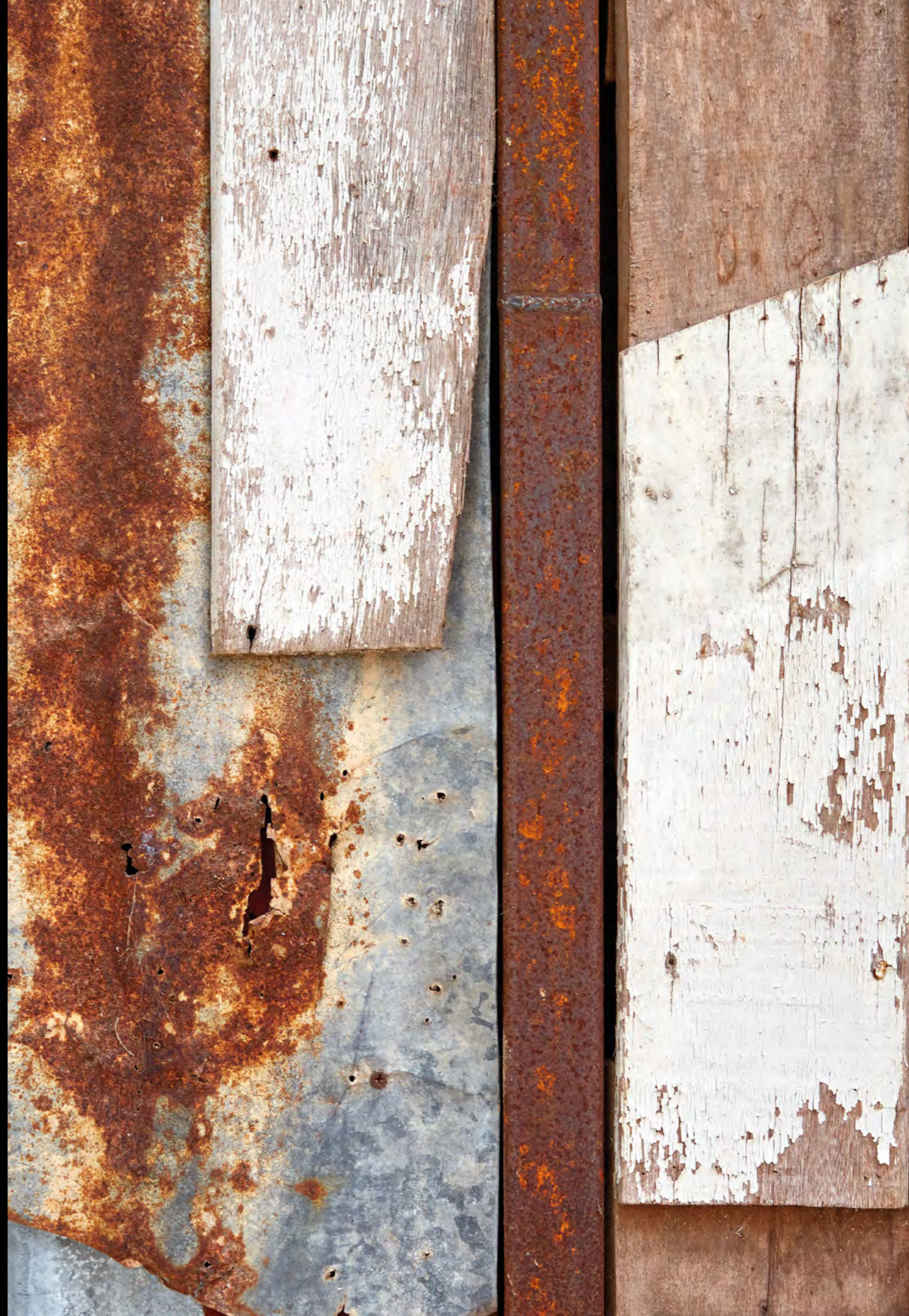


p43
African Blue Stone

The Expona Design collection of 30 shades spans a plethora of wood species, natural stone and man-made materials, each featuring a complementary surface texture for an authentic appearance. Browse through the following pages, or navigate directly to the shade you want using the references above.

BE INSPIRED

Developed to appeal to one's imagination, Expona Design introduces creative and graphic designs created using both illustrative and photographic techniques. The collection successfully parallels Expona's tradition of strong innovation and individuality, whilst retaining focus on practicality and interior longevity within commercial environments.

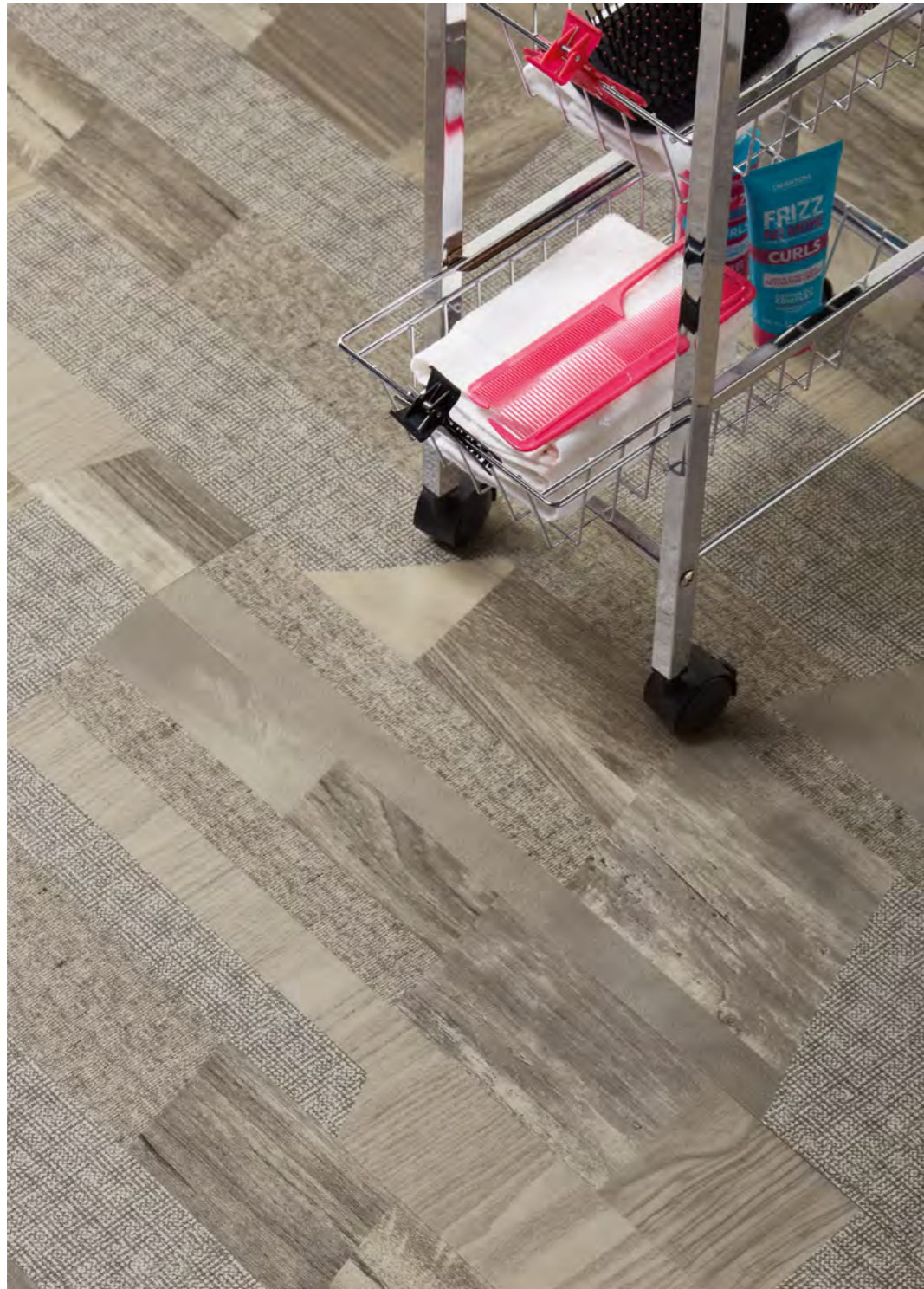




9127 Sepia Medley 184.2 x 1524mm Emboss: Patchwork structure







9125 Smoked Medley 184.2 x 1524mm Emboss: Patchwork structure







9148 Monochrome Geotexture 304.8 x 609.6mm Emboss: Textile structure





9147 Cream Geotexture 304.8 x 609.6mm Emboss: Textile structure





9139 Grey Stencil Concrete 609.6 x 609.6mm Emboss: Smooth stone structure

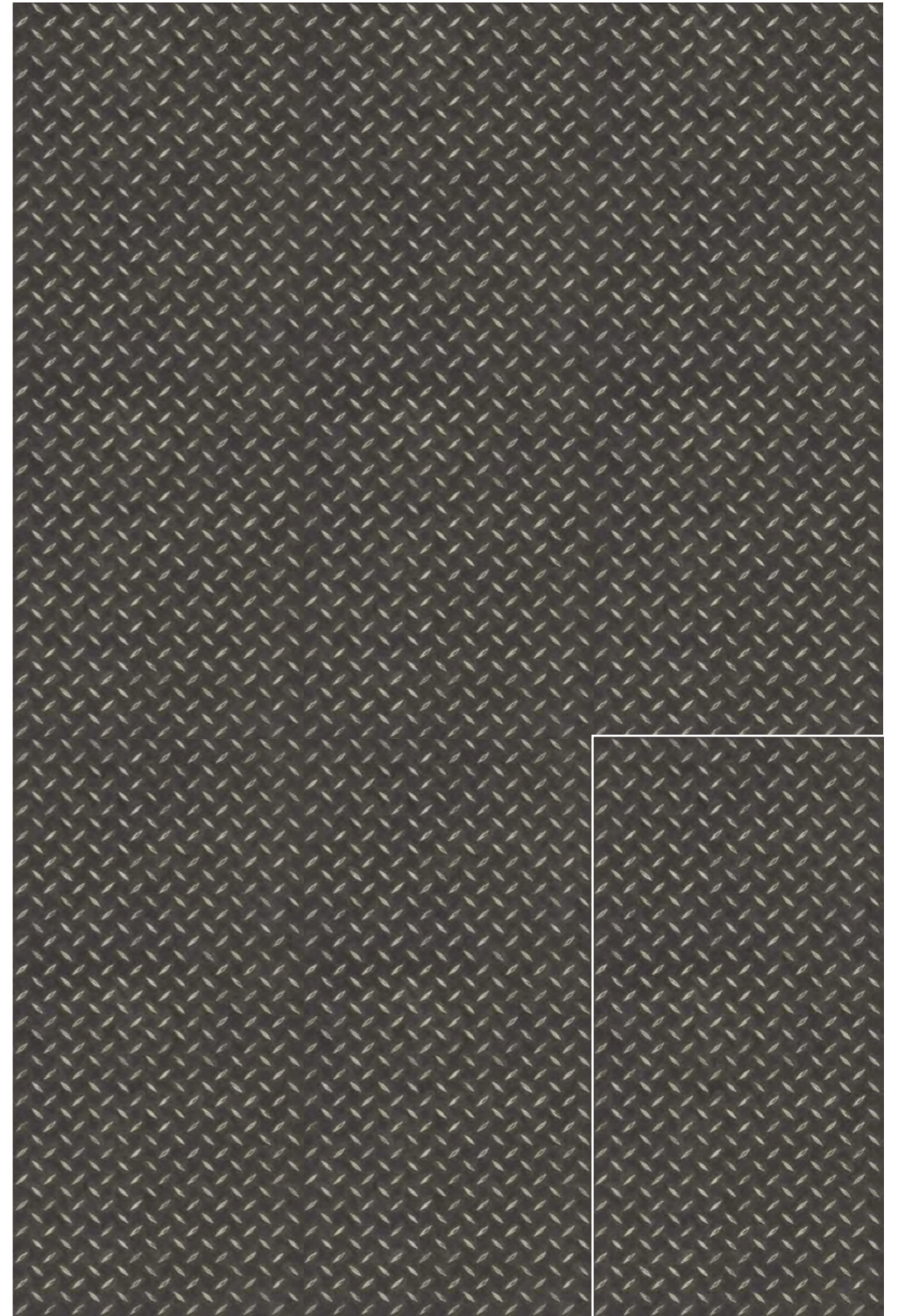




1. 9139 Grey Stencil Concrete 609.6 x 609.6mm Emboss: Smooth stone structure
 2. 9135 Wet Cement 609.6 x 1219.2mm Emboss: Smooth stone structure







8122 Black Treadplate 457.2 x 914.4mm Emboss: Treadplate structure



1. 8122 Black Treadplate 457.2 x 914.4mm Emboss: Treadplate structure
 2. 6182 Light Elm 152.4 x 914.4mm Emboss: Fine wood structure





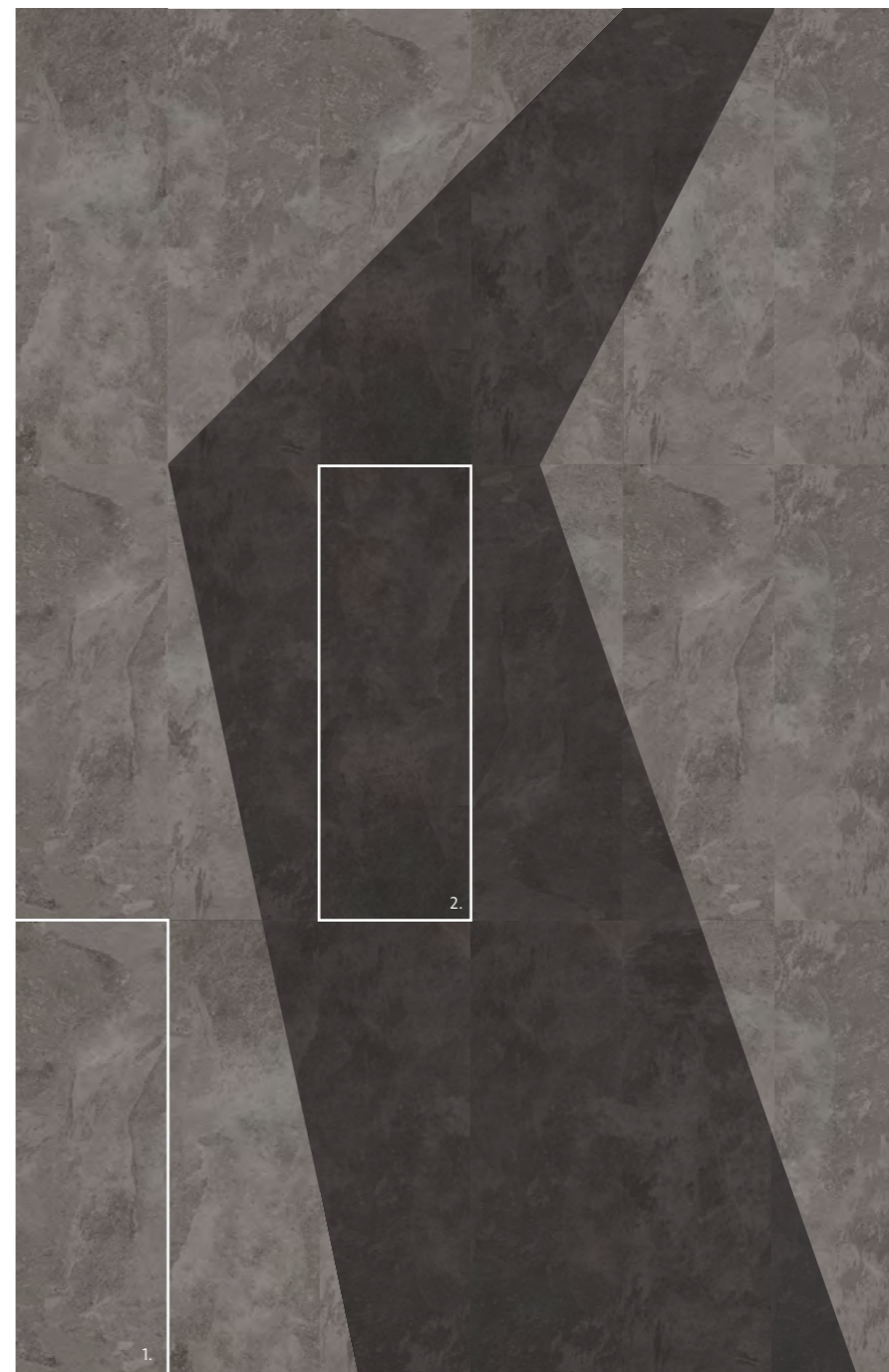
9038 Promenade Oak 184.2 x 1524mm Emboss: Oak wood structure





9146 Charcoal Slate 304.8 x 914.4mm Emboss: Smooth slate structure





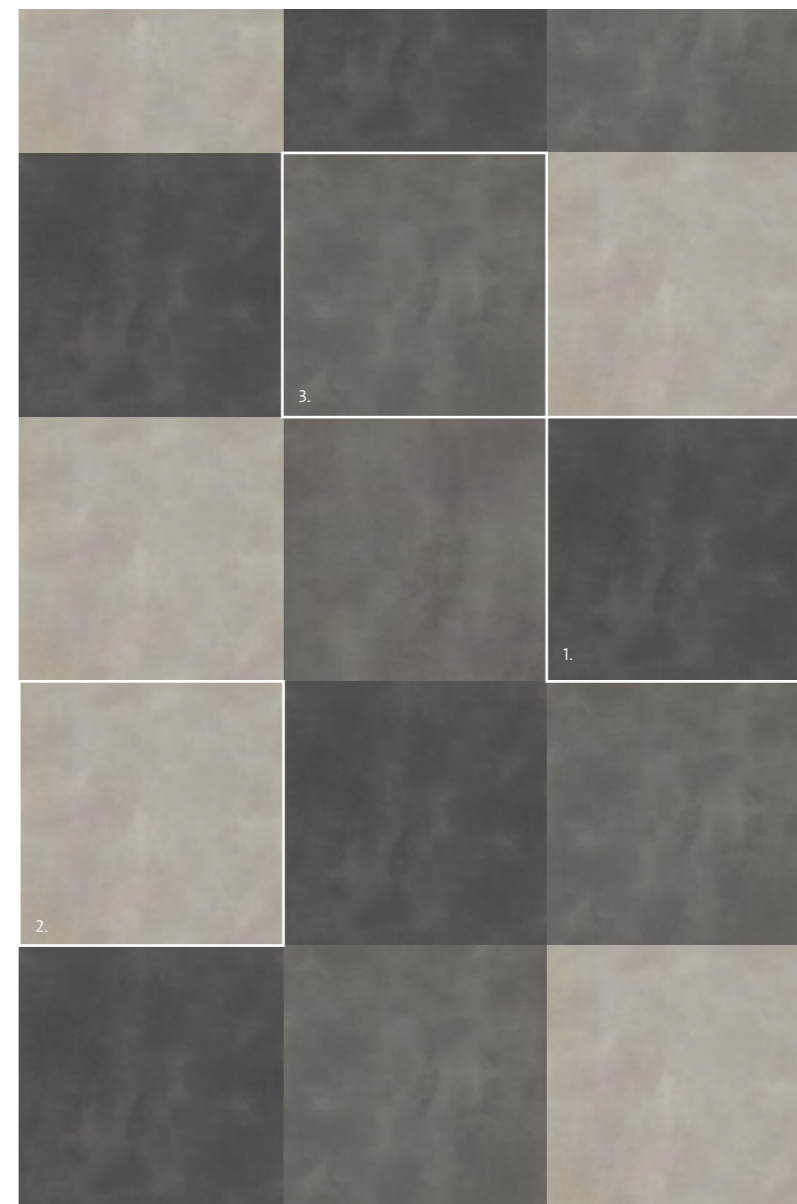
1. **9145 Silverline Slate** 304.8 x 914.4mm Emboss: Smooth slate structure
2. **9146 Charcoal Slate** 304.8 x 914.4mm Emboss: Smooth slate structure





1. 9039 Parkside Oak 184.2 x 1524mm Emboss: Oak wood structure
2. 7154 Atlantic Slate 304.8 x 609.6mm Emboss: Slate structure





- 1. **9132 African Blue Stone** 914.4 x 914.4mm Emboss: Natural stone structure
- 2. **9128 Pearl Stone** 914.4 x 914.4mm Emboss: Natural stone structure
- 3. **9131 Medina Stone** 914.4 x 914.4mm Emboss: Natural stone structure



9128 Pearl Stone 914.4 x 914.4mm Emboss: Natural stone structure





6179 Natural Brushed Oak 203.2 x 1219.2mm Emboss: Wood structure





9051 Reclaimed Inked Oak 203.2 x 1524mm Emboss: Distressed wood structure





1. 9049 Whiskey Barrel Timber 203.2 x 1524mm Emboss: Distressed wood structure
2. 7237 Cool Grey Concrete 609.6 x 609.6mm Emboss: Stone structure





9047 Rustic Spiced Timber 203.2 x 1524mm Emboss: Distressed wood structure



9047 Rustic Spiced Timber 053



9048 Salvaged Pier Timber 203.2 x 1524mm Emboss: Distressed wood structure





6146 Silvered Driftwood 203.2 x 1219.2mm Emboss: Relief wood structure



THE COLLECTION

The following spreads summarise the Expona Design collection, featuring accurate product scans and detailing all tile and plank sizes. Designs that feature pattern variations or bevelled edges are highlighted for easy identification, and the whole collection has been grouped by plank or tile size, so depending on the scale of the installation a suitable tile can be quickly selected.





9048 Salvaged Pier Timber
See page 55
Emboss: Distressed wood structure



9047 Rustic Spiced Timber
See page 52
Emboss: Distressed wood structure



9049 Whiskey Barrel Timber
See page 50
Emboss: Distressed wood structure



9051 Reclaimed Inked Oak
See page 49
Emboss: Distressed wood structure



Accurate authenticity is at the heart of Expona, representing the allure, distinction and unpredictability of natural timber and stone. To replicate these materials, the products may contain knots and variation in markings as part of their design.

Although we endeavour to ensure the brochure print process represents the true colour of each product, we recommend you view an actual sample which we shall be pleased to supply, free of charge. Visit polyflor.com and follow the samples link for further details.



9041 Pacific Oak
See page 7,18
Emboss: Oak wood structure



9039 Parkside Oak
See page 41,68
Emboss: Oak wood structure



9042 Mango Oak
See page 14
Emboss: Oak wood structure



9038 Promenade Oak
See page 35
Emboss: Oak wood structure



Accurate authenticity is at the heart of Expona, representing the allure, distinction and unpredictability of natural timber and stone. To replicate these materials, the products may contain knots and variation in markings as part of their design.

Although we endeavour to ensure the brochure print process represents the true colour of each product, we recommend you view an actual sample which we shall be pleased to supply, free of charge. Visit polyflor.com and follow the samples link for further details.



9127 Sepia Medley
See page 13,14
Emboss: Patchwork structure



9126 Coral Medley
See page 7,18
Emboss: Patchwork structure



9125 Smoked Medley
See page 16
Emboss: Patchwork structure



6146 Silvered Driftwood
See page 57
Emboss: Relief wood structure



6179 Natural Brushed Oak
See page 46
Emboss: Wood structure

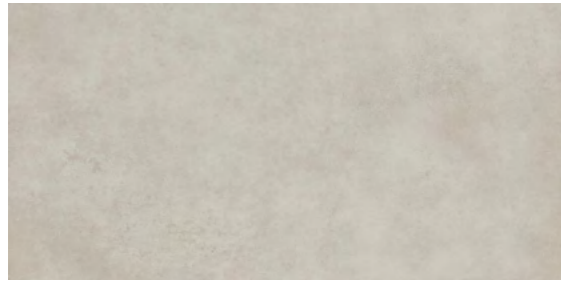


6182 Light Elm
See page 4,32
Emboss: Fine wood structure

Accurate authenticity is at the heart of Expona, representing the allure, distinction and unpredictability of natural timber and stone. To replicate these materials, the products may contain knots and variation in markings as part of their design.

Although we endeavour to ensure the brochure print process represents the true colour of each product, we recommend you view an actual sample which we shall be pleased to supply, free of charge. Visit polyflor.com and follow the samples link for further details.

24" x 48"
609.6 x 1219.2mm



9134 Frosted Cement
See page 23
Emboss: Smooth stone structure

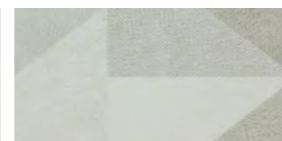
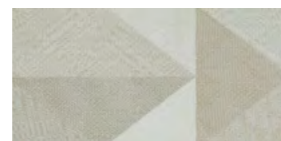
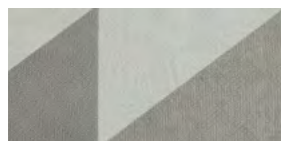
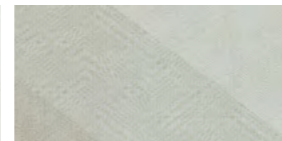
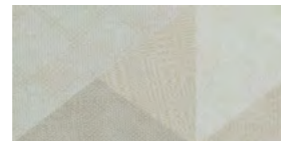
9137 Factory Cement
See page 54
Emboss: Smooth stone structure



9135 Wet Cement
See page 26
Emboss: Smooth stone structure

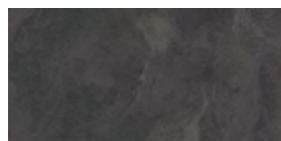
9133 Subway Cement
See page 28,78
Emboss: Smooth stone structure

12" x 24"
304.8 x 609.6mm



9148 Monochrome Geotexture
See page 21
Emboss: Textile structure

9147 Cream Geotexture
See page 5,7,19,22
Emboss: Textile structure



7154 Atlantic Slate
See page 20,41
Emboss: Slate structure

Accurate authenticity is at the heart of Expona, representing the allure, distinction and unpredictability of natural timber and stone. To replicate these materials, the products may contain knots and variation in markings as part of their design.

Although we endeavour to ensure the brochure print process represents the true colour of each product, we recommend you view an actual sample which we shall be pleased to supply, free of charge. Visit polyflor.com and follow the samples link for further details.

24" x 24"
609.6 x 609.6mm



9139 Grey Stencil Concrete
See page 25,26
Emboss: Smooth stone structure

9141 Rusted Stencil Concrete
See page 28,78
Emboss: Smooth stone structure



7237 Cool Grey Concrete
See page 50
Emboss: Stone structure

12" x 36"
304.8 x 914.4mm

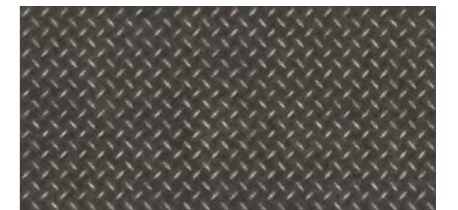


9145 Silverline Slate
See page 39,68
Emboss: Smooth slate structure



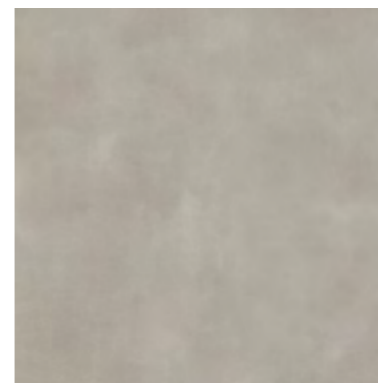
9146 Charcoal Slate
See page 36,39
Emboss: Smooth slate structure

18" x 36"
457.2 x 914.4mm

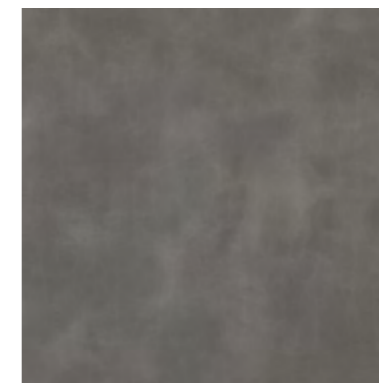


8122 Black Treadplate
See page 31,32
Emboss: Treadplate structure

36" x 36"
914.4 x 914.4mm



9128 Pearl Stone
See page 43,44
Emboss: Natural stone structure



9131 Medina Stone
See page 40,43
Emboss: Natural stone structure



9132 African Blue Stone
See page 43
Emboss: Natural stone structure



INLAY STRIPS

Developed to create authenticity across floor designs, inlay strips can be positioned between planks or tiles to bring an installation to life. They can also create zones and highlight features, or add a bold graphic look to an interior space.

Grouting Strips

5 x 914mm



2537 (2.5mm) / 3037 (3.0mm) Beige



2536 (2.5mm) / 3036 (3.0mm) Grey



2538 (2.5mm) / 3038 (3.0mm) Black

Marquetry Strips

5 x 914mm



2551 (2.5mm) / 3061 (3.0mm) Light Oak



2552 (2.5mm) / 3062 (3.0mm) Mid Oak



2553 (2.5mm) / 3063 (3.0mm) Walnut

Feature Strips

5 x 1000mm



5100 (2.5mm) / 0115 (3.0mm) Silver



5103 (2.5mm) / 0103 (3.0mm) Black



5110 (2.5mm) / 0114 (3.0mm) Brown

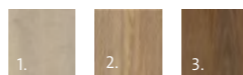
For bevelled planks and tiles, we recommend using 2.5mm gauge inlay strips.

SPECIALTY DESIGN FLOORS

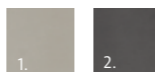
From the first stages of developing your interior space, we can help you realise your vision with a bespoke design floor installation. We have worked closely with many architects and designers over the years to realise eye-catching floor coverings for hundreds of buildings, across all commercial sectors. From conception to completion, we can provide visuals, advise on colour combinations and product selection to mirror the attitude and lifestyle of an overall scheme. There's virtually no limit to the shapes, patterns or imagery you can create with the help of Polyflor's design service, realised through the precision and flexibility of waterjet cutting technology to meet your unique requirements.



- 1. 9041 Pacific Oak
- 2. 6179 Natural Brushed Oak
- 3. 9039 Parkside Oak



- 1. 9128 Pearl Stone
- 2. 9132 African Blue Stone



- 1. 9135 Wet Cement
- 2. 9133 Subway Cement

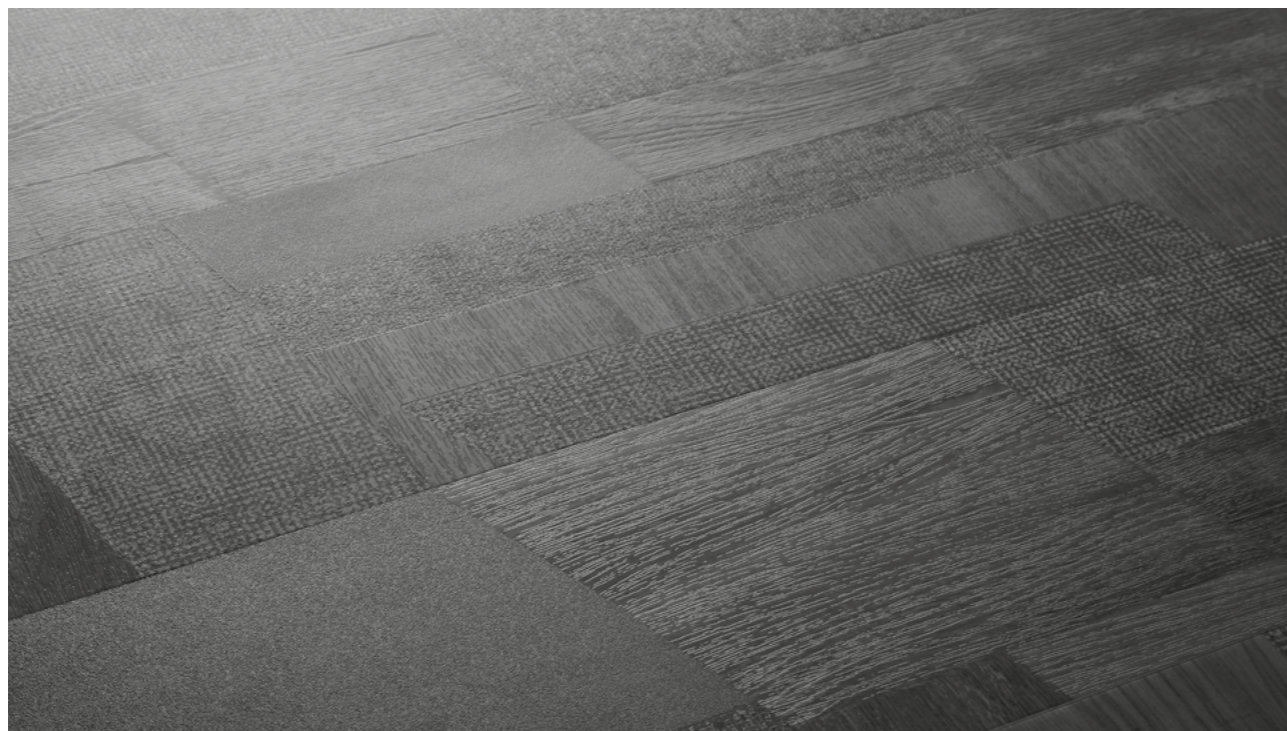


EMBOSES

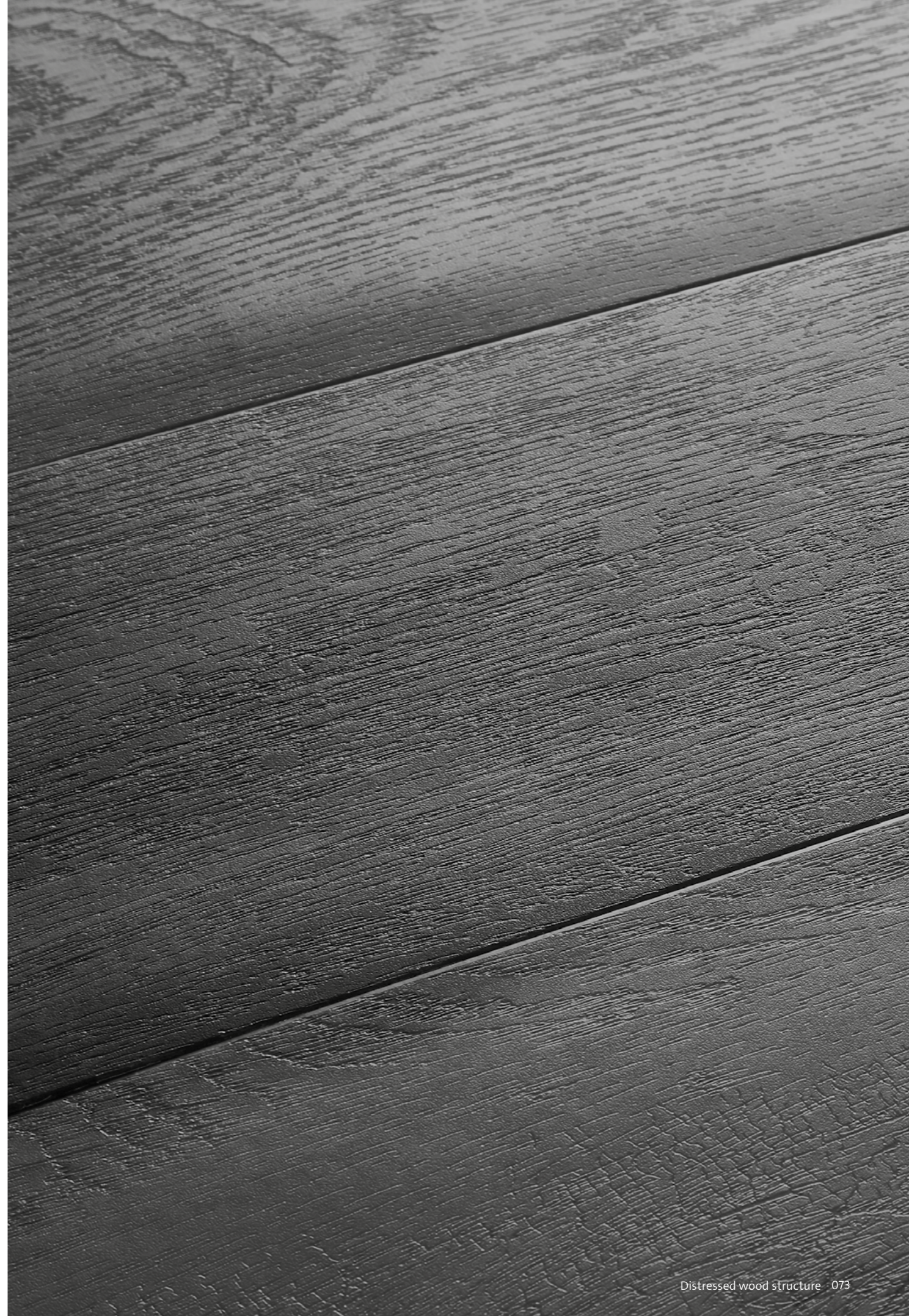
Expona Design offers exceptional quality and a range of leading wood and stone designs as a result of extensive research and innovative product development. The combination of high-clarity design film and faithful surface textures make Expona the supreme flooring choice. The surface embossing developed for the Expona Design collection has been designed to precisely replicate the appearance and feel of real wood timbers, natural stone structures and abstract floor patterns, and then paired with each corresponding design for a premium finish.



Coral Medley



Patchwork structure



EMBOSESSES



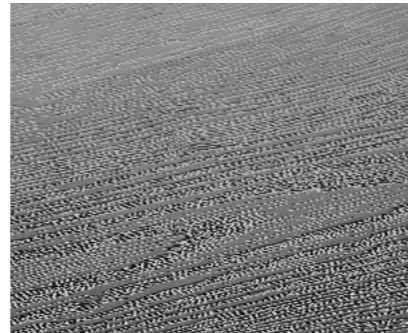
Textile structure



Wood structure



Fine wood structure



Oak wood structure



Relief wood structure



Stone structure



Natural stone structure



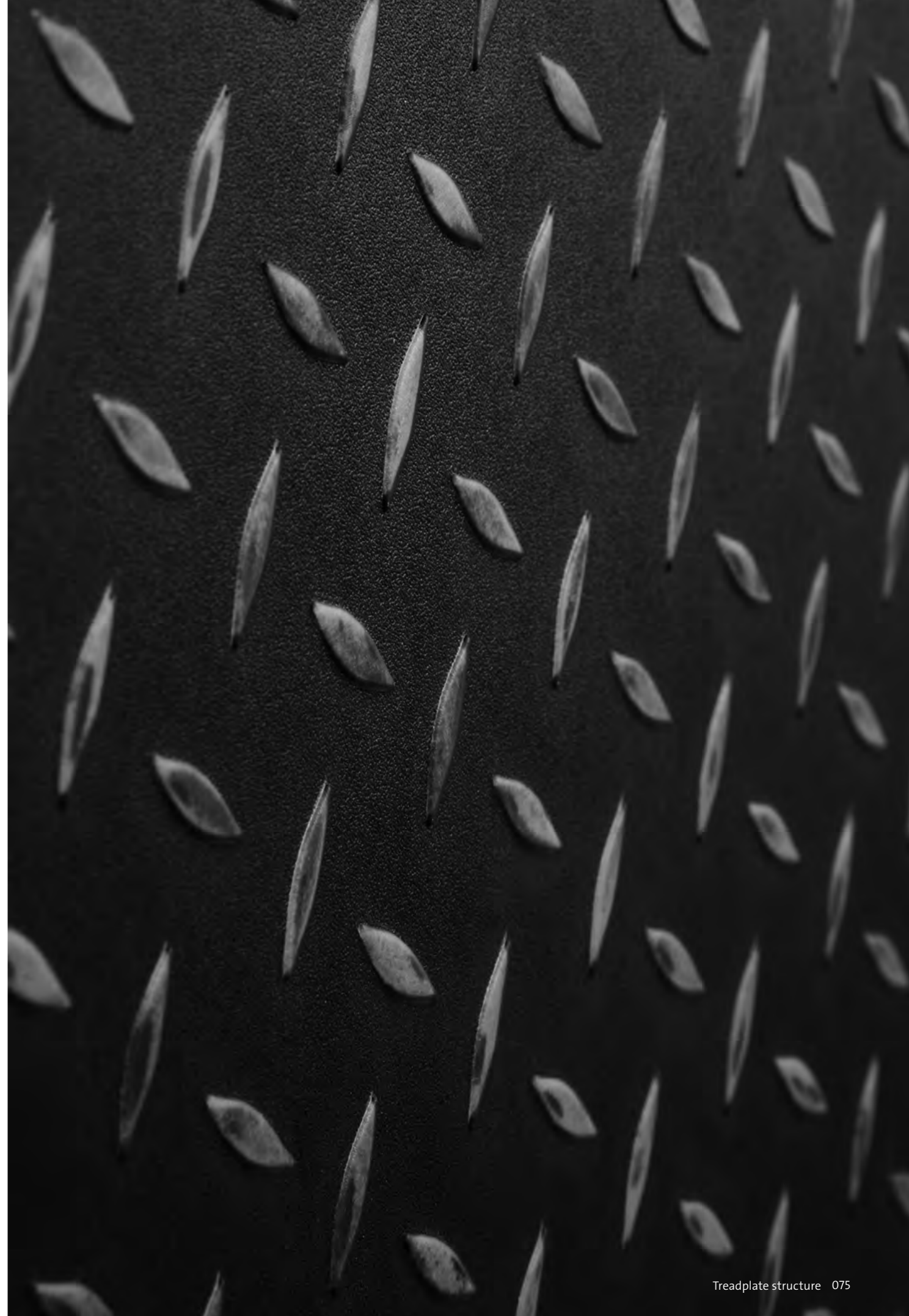
Smooth stone structure



Slate structure

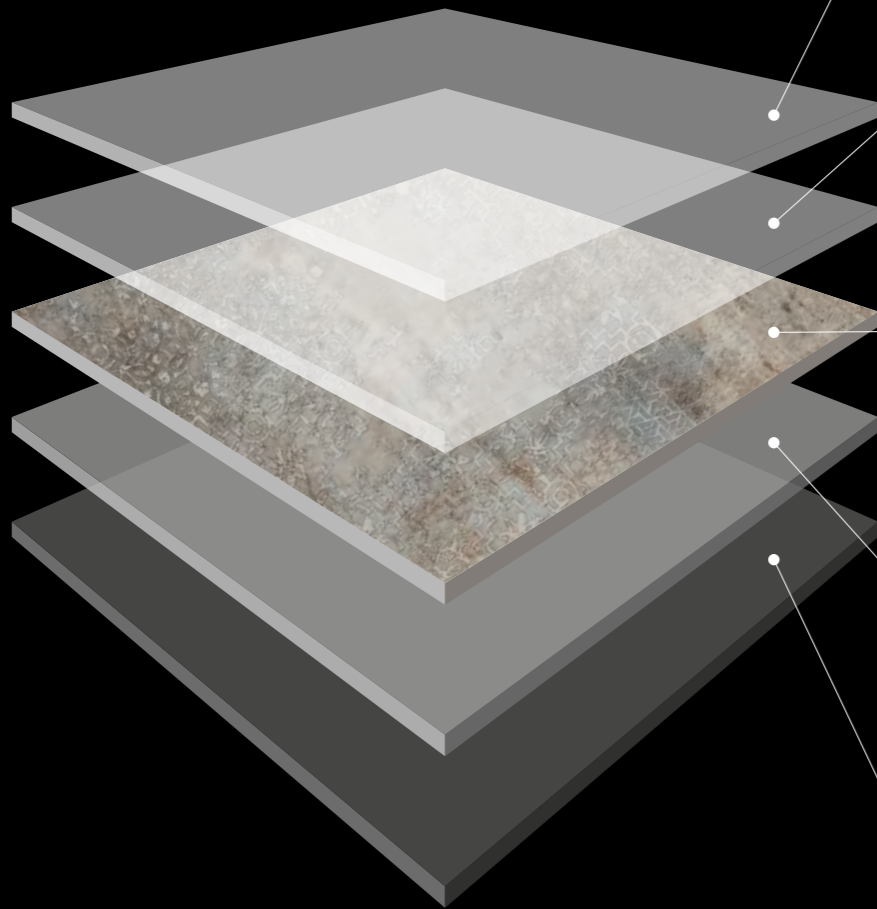


Smooth slate structure



STRUCTURE

Expona tiles and planks consist of individual layers which are thermally pressed and feature a polyurethane reinforcement (PUR). Expona combines a vast range of authentic wood and stone designs alongside creative, innovative and abstract effects with the excellent easy-care characteristics of PVC flooring.



Polyurethane Reinforcement

The PUR treatment supports a simple cleaning regime.

Wear layer

The embossed, 0.7mm, high-density and transparent layer is hard wearing and protects the design.

Decoration layer

An innovative printing technique makes the high-clarity design film a true representation of natural materials.

Stabilisation layer

Improved dimensional stability is achieved by minimising the effect of surrounding physical properties e.g. temperature fluctuations.

Load-bearing layer

The basis for the long service life and high performance of Expona.

TECHNICAL DATA

Characteristics	Standards	Unit	EXPONA DESIGN
Type of floor covering	EN ISO 10582		Heterogeneous, PVC
Surface treatment			PUR
Total weight	EN ISO 23997	g/m ²	5,100
Performance classification	EN ISO 10874		23 / 34 / 43
Gauge	EN ISO 24346	mm	3.0mm
Wear layer thickness	EN ISO 24340	mm	0.7mm
Packaging and plank sizes	EN ISO 24342	mm	24 @ 152.4 x 914.4 = 3.34m ²
			14 @ 203.2 x 1219.2 = 3.46m ²
			12 @ 184.2 x 1524 = 3.37m ²
			11 @ 203.2 x 1524 = 3.41m ²
Packaging and tile sizes	EN ISO 24342	mm	9 @ 609.6 x 609.6 = 3.34m ²
			18 @ 304.8 x 609.6 = 3.34m ²
			12 @ 304.8 x 914.4 = 3.34m ²
			8 @ 457.2 x 914.4 = 3.34m ²
			6 @ 914.4 x 914.4 = 5.01m ²
6 @ 609.6 x 1219.2 = 4.46m ²			
Dimensional stability	EN ISO 23999	%	≥0.1
Residual indentation	EN ISO 24343-1	mm	0.05**
Colour fastness to artificial light	EN ISO 105-B02	level	≥ 6
Behaviour to fire	EN 13501-1 CAN/ULC-S102.2		Bfl - S1 Pass - Flame Spread <300, Smoke Developed <500
Slip resistance	EN 13893 DIN 51130 AS 4586		DS [▲] R10 R10
Resistance to thermal conductivity	EN 12667 ISO 8302	m ² K/w	0.02
Assessment of static electrical propensity	EN 1815	kV	< 2
Chemical resistance	EN ISO 26987		*
Abrasion resistance	EN ISO 10582 EN 649		Type I Group T
Castor chair suitability	ISO 4918		Yes
Underfloor heating suitability	EN 1264-2		Suitable, max 27°C
VOC emissions	Indoor Air Comfort Gold Floorscore AgBB		Eurofins certified product Certified product Very low emissions
Environmental product declaration	EN 15804		DGNB Navigator www.dgnb-navigator.de
Responsible sourcing	BES 6001 SA 8000		Very Good Approved Factory

▲ For safety flooring with sustainable wet slip resistance, refer to Expona Control PUR or the Polysafe ranges

* Resistant depending on concentration and time of exposure, in case of increased impact of oils, grease, acids, alkalis and other aggressive chemicals please contact us. Averaged test value from current production

** Heavy rolling loads to be avoided

SUSTAINABILITY

As a leading global manufacturer of high quality, high performance floor coverings, Polyflor has demonstrated a high level of commitment to minimising the impact our products have on the environment, and endeavour to meet these requirements with a focus on sustainability and a healthy indoor climate. In doing so, Polyflor is the first flooring manufacturer to achieve BES 6001 certification for Responsible Sourcing.

Polyflor, a company of James Halstead PLC, supports sustainable construction and has prepared a product specific Environmental Product Declaration (EPD) for Expona Design, in accordance to EN 15804 and verified by the Institute for Construction and Environment (Institut Bauen und Umwelt e.V. (IBU)) for the environmental assessment of buildings. Expona Design has also been assessed and certified for BRE Global and Global GreenTag Life Cycle Analysis ecolabel programmes.

Expona Design has the prescribed CE mark, as a European declaration of performance and is regularly tested to ensure the exceptional standards are continually met by external third parties including Eurofins, one of Europe's leading service providers in the field of analysis. Through these annual external inspections, Eurofins have awarded Expona Design the Indoor Air Comfort Gold rating. This certificate is awarded to products with VOC emissions below any globally determined VOC limits. Expona Design is also certified with FloorScore, and Afsset.

All Expona flooring is 100% recyclable and contains an average 40% recycled material. For the reasons listed, the range contributes positively in obtaining credits on BREEAM, LEED, SKA and Green Star assessed projects.

ORDER SAMPLES

Polyflor provide a complimentary product sample service so you can sample your choice of flooring before you make your final selection, and ensure you find the exact floor covering you are looking for. To order your free sample of any Expona Design colour, visit the Polyflor website, call the dedicated Polyflor Samples Hotline on +44 (0) 161 767 2551 or speak with your local Polyflor provider.

VISIT US ONLINE

Visit polyflor.com for detailed product and technical information on all flooring collections within the Polyflor portfolio. Our award winning website provides an easy to follow navigation system to help you find exactly what you are looking for, free downloads, and free product and literature samples which can be easily ordered through the website.

CONTACT US

For general information on your specific project, either speak with your local Polyflor provider or contact us directly. If you require additional detailed technical data, either visit polyflor.com and follow the links to the technical pages, contact Polyflor Customer Technical Services on +44 (0) 161 767 1912 or email tech@polyflor.com.



100% RECYCLABLE
40% RECYCLED MATERIAL



PRODUCT INDEX

Shade	Page Number
African Blue Stone	p43
Atlantic Slate	p20,41
Black Treadplate	p31,32
Charcoal Slate	p36,39
Cool Grey Concrete	p50
Coral Medley	p7,18
Cream Geotexture	p5,7,19,22
Factory Cement	p54
Frosted Cement	p23
Grey Stencil Concrete	p25,26
Light Elm	p4,32
Mango Oak	p14
Medina Stone	p40,43
Monochrome Geotexture	p21
Natural Brushed Oak	p46
Pacific Oak	p7,18
Parkside Oak	p41,68
Pearl Stone	p43,44
Promenade Oak	p35
Reclaimed Inked Oak	p49
Rusted Stencil Concrete	p28,78
Rustic Spiced Timber	p52
Salvaged Pier Timber	p55
Sepia Medley	p13,14
Silvered Driftwood	p57
Silverline Slate	p39,68
Smoked Medley	p16
Subway Cement	p28,78
Wet Cement	p26
Whiskey Barrel Timber	p50

POLYFLOR™ INTERNATIONAL

Australia
Polyflor Australia
Tel: 1800 777 425
E-mail: sales@polyflor.com.au

Canada
Polyflor Canada Inc.
Tel: +1 905 364 3000
E-mail: sales@polyflor.ca

China
Polyflor Hong Kong
Tel: +(852) 2865 0101
E-mail: info@polyflor.com.hk

France
James Halstead France SAS
Tel: +33 (0) 8 20 20 32 11
E-mail: info@jhfFrance.fr

Germany
objectflor Art und Design Belags GmbH
Tel: +49 (0) 2236 966 330
E-mail: info@objectflor.de

India
Polyflor India Pvt Ltd
Tel: +91 22 4023 2485
E-mail: info@polyflor.co.in

Ireland
Polyflor Ireland
Tel: +353 (1) 864 9304
E-mail: salesireland@polyflor.com

Middle East
Polyflor FZE
Tel: +971 50 4068114
E-mail: aelwakil@polyflorfze.ae

New Zealand
Polyflor New Zealand Ltd
Tel: +64 9 269 1111
Tel: 0800 765 935
E-mail: sales@polyflor.co.nz

Norway
Polyflor Nordic
Tel: +47 23 00 84 00
E-mail: firmapost@polyflor.no

Poland
Polflor Sp. Z o.o.
Tel: +48 (0) 61 820 3155
E-mail: polyflor@polflor.com.pl

South Africa
Poly Sales Africa (Pty.) Ltd
Tel: +27 (0) 11 609 3500
E-mail: info@polyflor.co.za

Sweden
FalckDesign AB
Tel: +46 (0) 300 15820
E-mail: info@falckdesign.com

POLYFLOR™ UK

Polyflor Ltd. PO Box 3, Radcliffe New Road
Whitefield, Manchester, M45 7NR

UK Sales Direct: +44 (0) 161 767 1122
Export Sales Direct: +44 (0) 161 767 1913
UK Fax: +44 (0) 161 767 1128
Export Fax: +44 (0) 161 767 1166
Technical Support: +44 (0) 161 767 1912
Reception: +44 (0) 161 767 1111
E-mail: info@polyflor.com



For details on distribution,
as well as up to date product and
technical information, please visit

www.polyflor.com